

Satzspiegel Festschrift

IRMS eG

Endformat : 210 x 270 mm

Festschrift: 180 x 240 mm

Ränder:

Oben: 15 mm

Innen: 20 mm

Unten 15 mm

Außen: 20 mm

4 Spaltig

1 Spalte = 45 mm

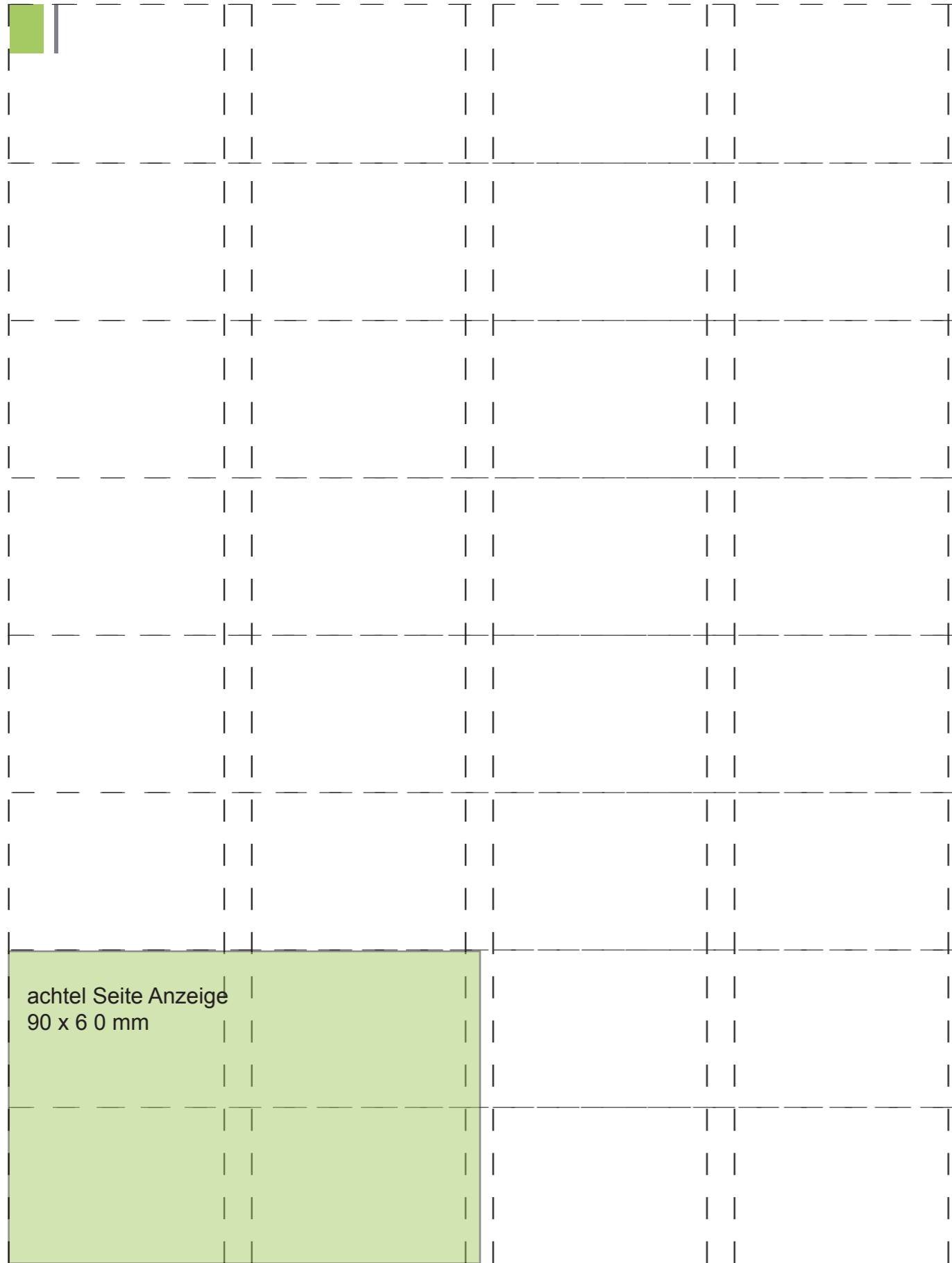
Umschlag:

Hardcover, 4/0 farbig bedruckt

Innen:

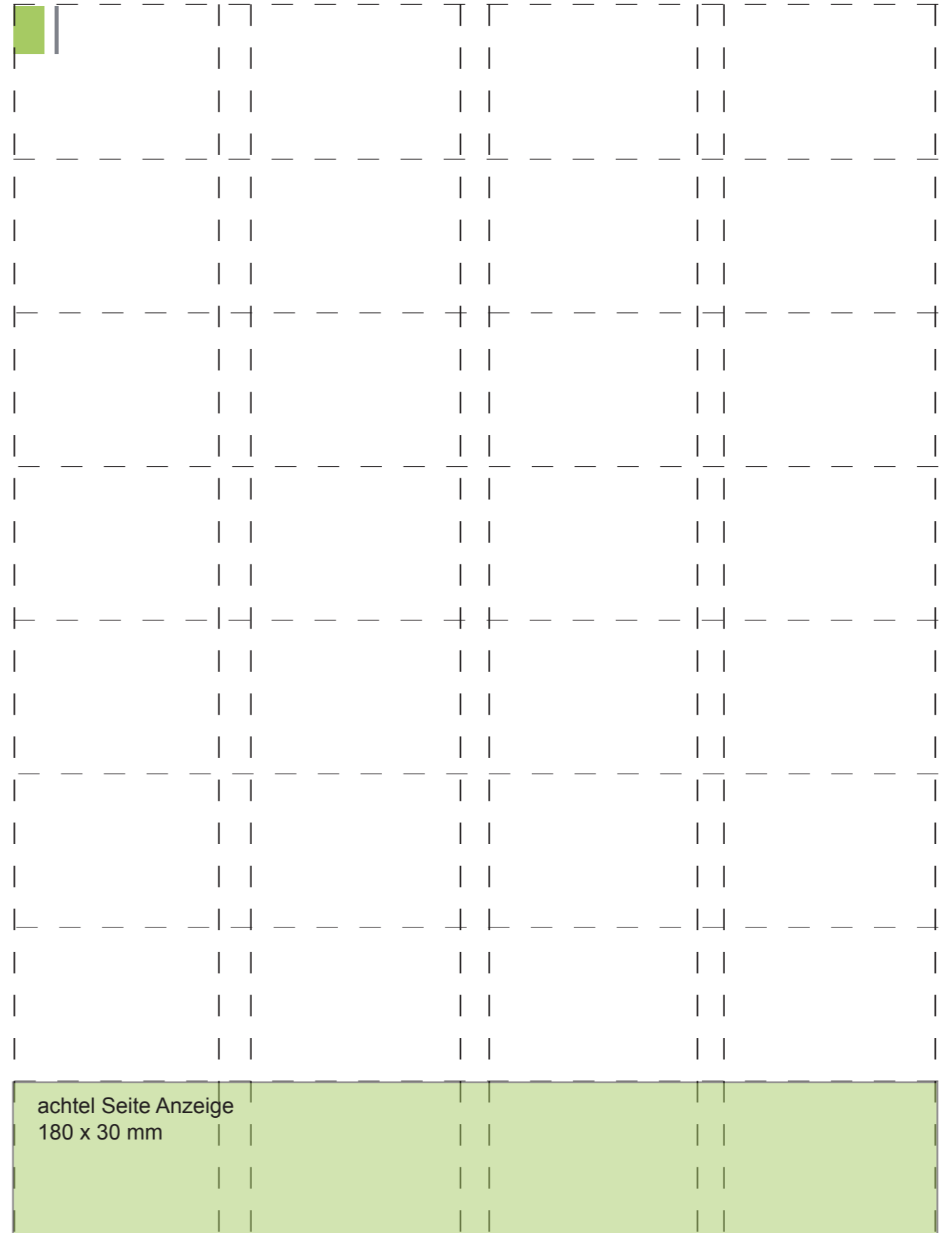
120 g/qm weiss mattgestrichen, 4/4 farbig

Satzspiegel 180 x 240 mm

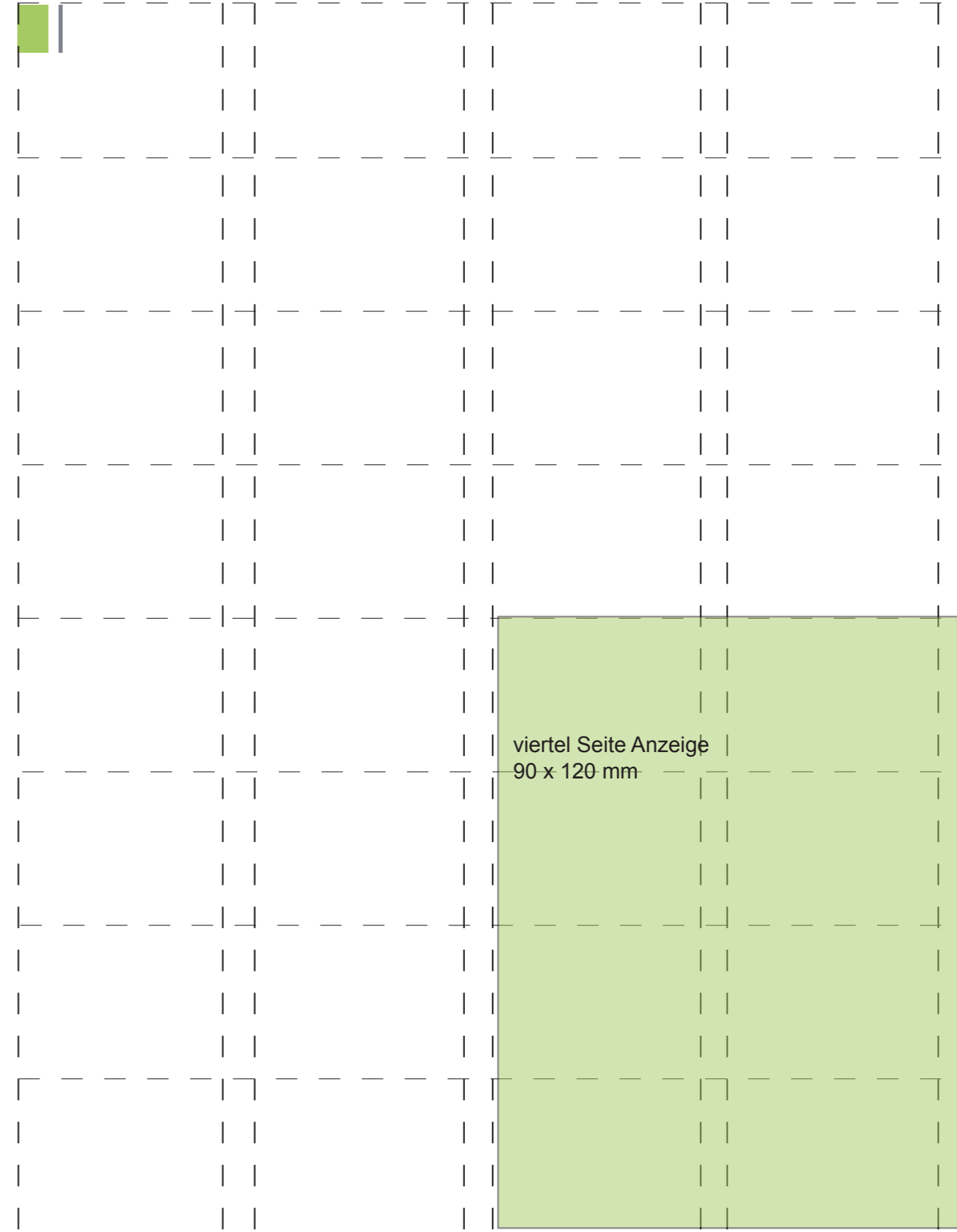
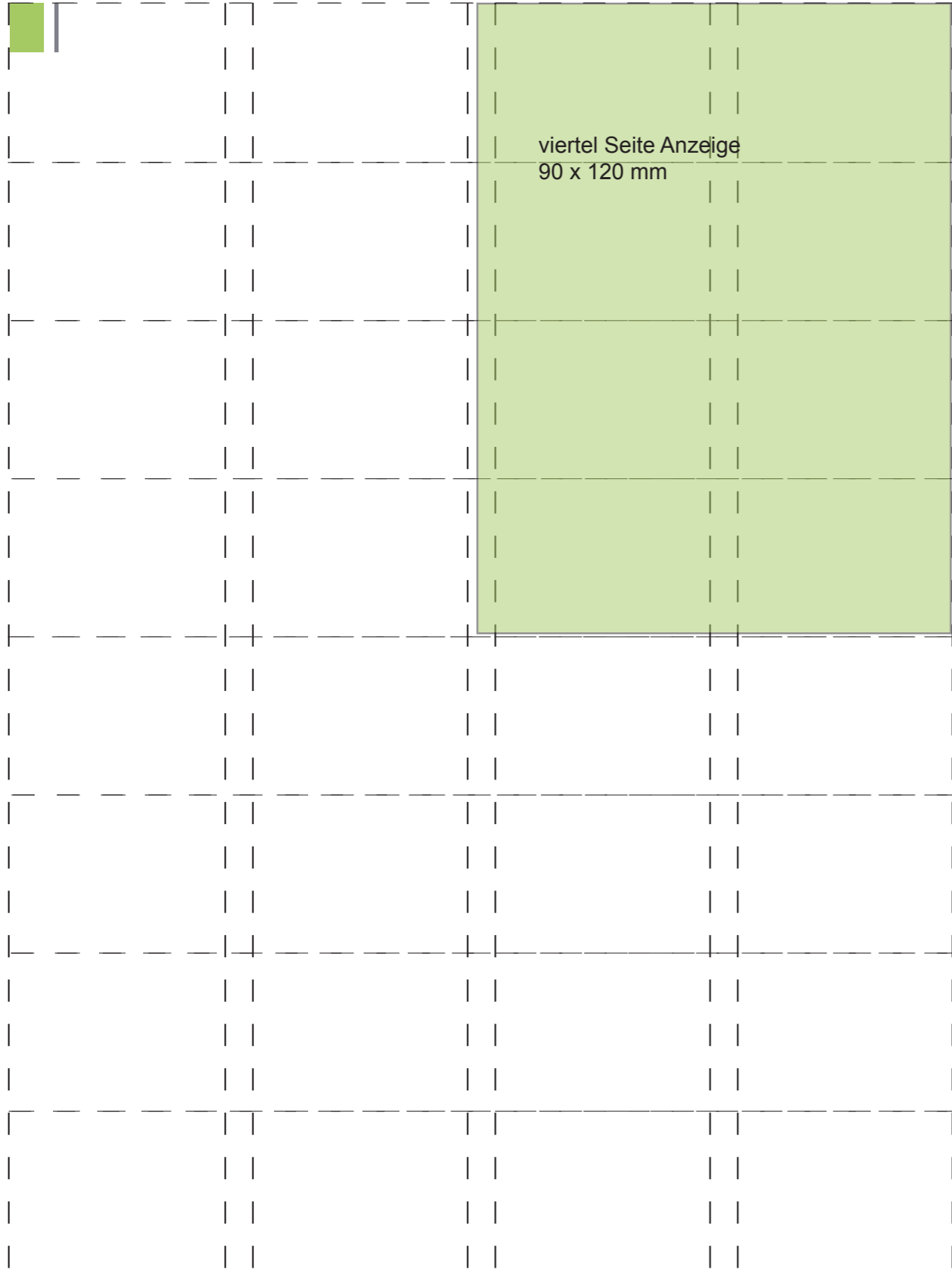


achtel Seite Anzeige
90 x 60 mm

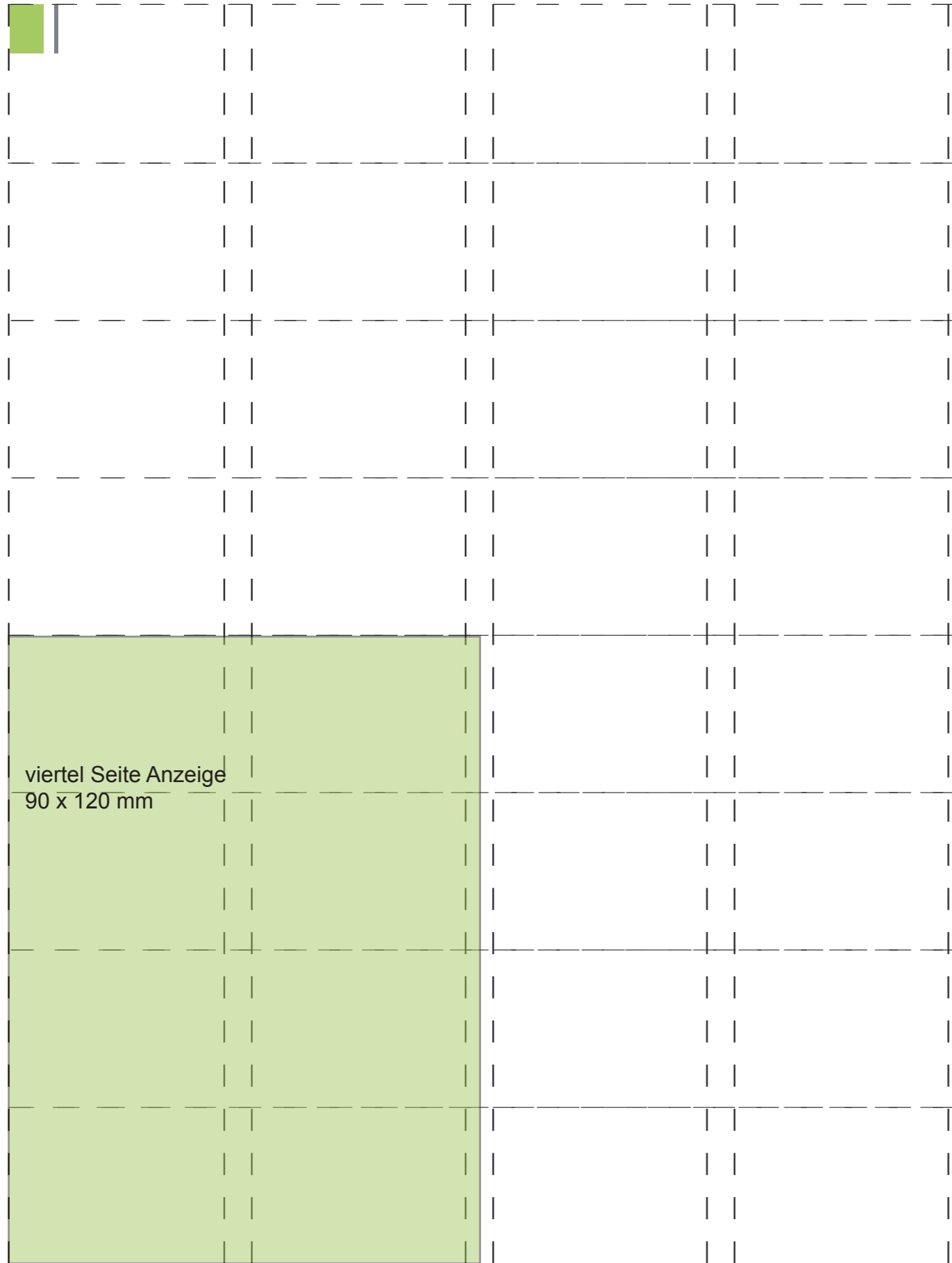
Satzspiegel 180 x 240 mm



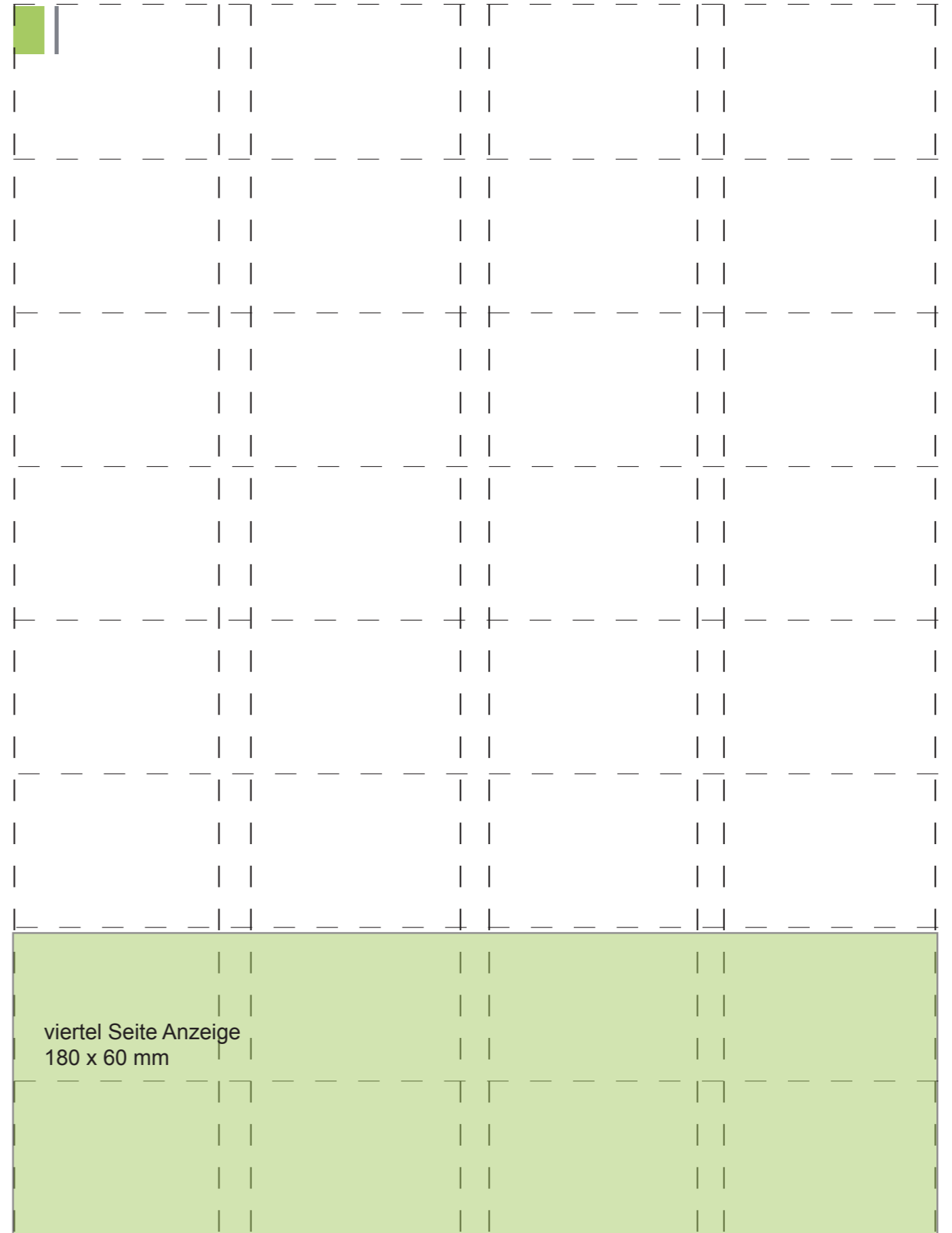
achtel Seite Anzeige
180 x 30 mm



Satzspiegel 180 x 240 mm



Satzspiegel 180 x 240 mm



halbe Seite Anzeige
180 x 120 mm

This diagram shows a grid of 12 columns and 12 rows. The bottom four rows are shaded green. The text 'halbe Seite Anzeige 180 x 120 mm' is located in the top-left corner of the green area. A small green square and a vertical line are in the top-left corner of the grid.

halbe Seite Anzeige
90 x 240 mm

This diagram shows a grid of 12 columns and 12 rows. The right half of the grid (the last six columns) is shaded green. The text 'halbe Seite Anzeige 90 x 240 mm' is located in the top-left corner of the green area. A small green square and a vertical line are in the top-left corner of the grid.

